

Specification

| | |
|--------------------|-------------------|
| Model | QAI DBT2EU |
| Panel Standard | EU Standard |
| Input | Bluetooth |
| Output | Dante |
| Frequency Response | 20Hz-20kHz ±3dB |
| THD+N | <0.05% @1kHz |
| SNR | >105dB |
| Sample Rate | 44.1/48kHz |
| Bit Depth | 24bit |
| Protocol | A2DP/HFP/AES67 |
| Power Supply | PoE |
| Dimension (W*H*D) | 86x86x34.5mm |
| Net Weight | 115g |

Dante Bluetooth Wall Panel QAI DBT2EU



Web page: www.lucky-tone.com Contact: info@lucky-tone.com

Specifications are subject to be changed without notice.



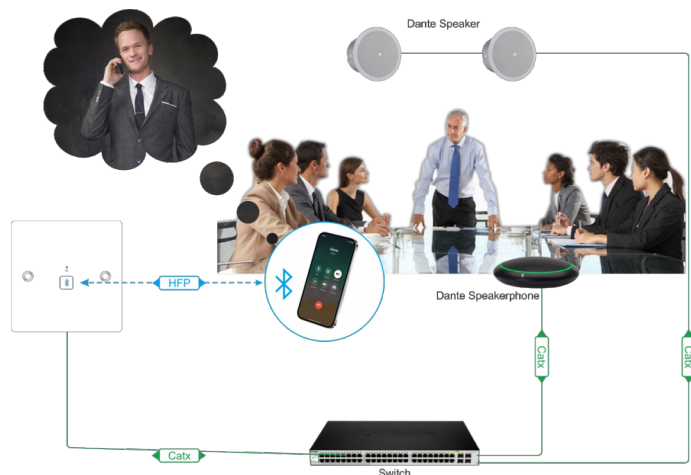
User's Manual



Features

- ▶ Bluetooth audio converted directly to Dante network output.
- ▶ Single-cable PoE power, no local power supply required.
- ▶ Quick and easy one-touch bluetooth pairing.
- ▶ Remote configuration and control via Dante Controller.

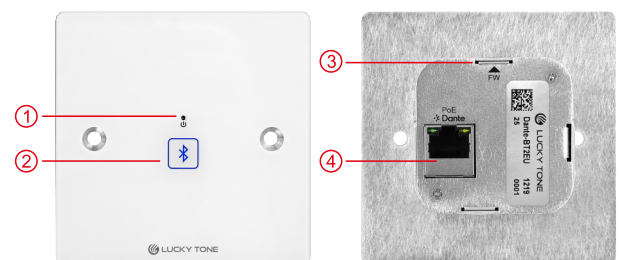
System Diagram



User's Manual



Panel Description



| NO. | Name | Description |
|-----|-----------------|--|
| 1 | POWER INDICATOR | 1x green LED, power input indicator. ● Green on: device on. ● LED off: device off. |
| 2 | PAIRING BUTTON | 1x Illuminated buttons, for device pairing ● Light flash: pairing... ● Light on: paired ● Light off: pairing failed Press it for pairing or Bluetooth off. If there is no Bluetooth pairing in 1 minute, Bluetooth is turned off. Press for 5s can reset device. |
| 3 | FW | 1x USB-C, FW upgrade. |
| 4 | Dante | 1x RJ45, transmit network audio and support receive power via PoE. |